



University of California  
San Francisco

*advancing health worldwide™*

# Strategic Plan Implementation

January 27, 2011

Department of Medicine

**Seth Landefeld**

*Associate Chair for Strategic  
Planning and Implementation*

*Our Mission*

*To advance health, we develop and support innovators.*

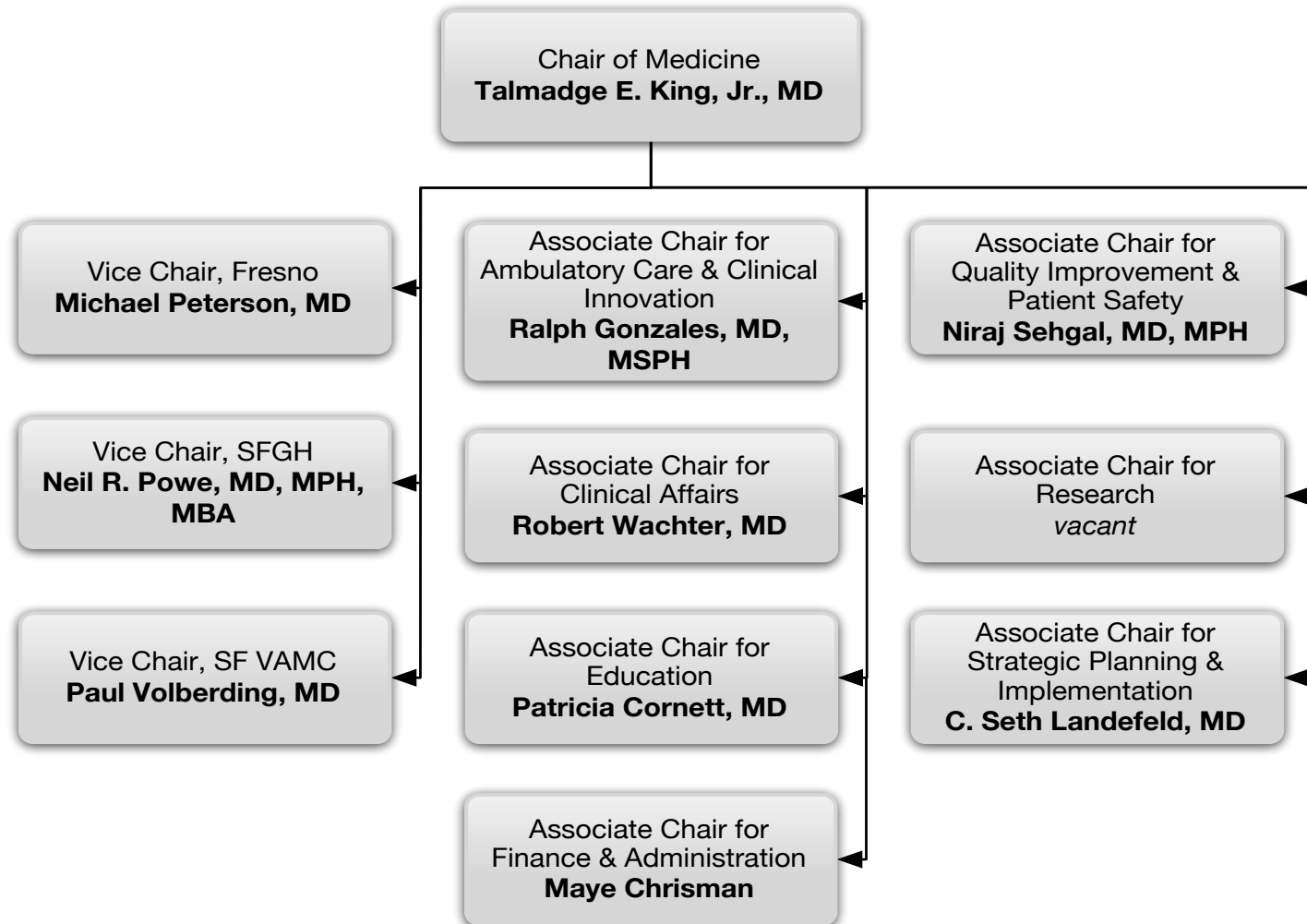
# Work Accomplished

- Strategic Priorities
- DOM Structure, Function, & Resources



Strategic Priorities

# The Chair's Group



# Research Priority

## Recommendations

1. Appoint an Associate Chair for Research
2. Reconstitute the Research Priority Team under Associate Chair
3. Impanel a DOM Space Governance Committee
4. Develop a Departmental vision for areas of research priority.

## **Clinical Priority: Associate Chair for Ambulatory Care and Clinical Innovation**

1. Ralph Gonzales appointed, effective February 1, 2011
2. Lead management team for ambulatory services
3. Develop a consistent and high-quality patient experience in the outpatient setting
4. Work with the Associate Chairs for QI/Safety and Education, and with the specialty practices

# Recruitment & Retention and Economic Model Priorities: Faculty Compensation Analysis

1. In-depth presentation at December All Chief's Meeting at SFGH
2. DOM Administration will review division level data
3. Articulate process and desired outcomes of the review

# Recruitment and Retention Priority: Faculty Search Process

1. Two focus groups:
  - Division Chief searches
  - Standing Committee searches
2. Invited faculty represent diversity of DOM

## Educational Priority

1. SFVAMC named Center of Excellence in Primary Care Education
  - 5 of 37 VAMCs funded
  - \$5 million over 5 years
  - Model for Interprofessional Education
2. Duty Hour plans finalized across DOM
3. Evaluation Plan to link EPAs to ABIM Milestones

# Unified DOM: Specialty Chiefs Meetings

1. Four meetings since November 2010:  
GI, Cardiology, DGIM, Hem/Onc
2. Similarities across specialties:
  - Recruitment of fellows is a priority for collaboration
  - Resource constraints at SFGH
3. Differences across specialties
  - Spectrum of collaborative activities: meeting, problem-solving, faculty recruiting
  - Spectrum of priorities

# Unified DOM: Frontiers of Medicine

1. Focus on the Strategic Priorities:
  - public policy, education, research and clinical priorities to date
2. The April issue: Education

# Unified DOM: New Website

- **New Design**

- Designer worked on DHM site
- Drop-down menu
- Cleaner look, logical layout
- More compelling imagery

- **New Features**

- Improved calendar with feeds
- News feeds
- **More** news
- Automated faculty profiles
- “Superfooter”

# Unified DOM: Videoconferencing

- **Teaching & Learning Center is open!**
  - More videoconferencing rooms at Parnassus
  - TeleMedicine infrastructure
- **ITS sanctions Skype**
  - Developing guidelines for VOIP services
  - Enhancements to TeleMedicine infrastructure are coming
- **ETS can host or route your videoconferences**
  - Rooms at Parnassus, Mission Bay and Mount Zion
  - <https://edtech.ucsf.edu/video-services/video-conferencing>

“We develop and support innovators”



University of California  
San Francisco

---

*advancing health worldwide™*